

AUSTRALIA

Places and Geographic Features

Welcome to **Australia**! Australia is the smallest continent, totaling about five percent of the land on earth. Australia is an isolated continent, surrounded by water. It is located in the southern hemisphere and is called the "land down under" for this reason. Australia lies between the Indian Ocean and the Pacific Ocean.

Australia is a very flat continent. It is a vast plateau, eroded over millions of years. Much of the central and western continent is made up of deserts and flat, dry plains. The mountains of Australia are much lower than those of other continents. The Eastern Highlands divide the dry western areas from the more fertile eastern coast. These Highlands are made up of several small mountain ranges of many different heights. They include the mountains of Tasmania.

The coastline of Australia stretches for 23,000 miles and includes many long sandy beaches. The Great Barrier Reef, off the northeastern coast, is the longest coral reef in the world.

In addition to being a continent, Australia is also an independent country. The official name is the Commonwealth of Australia. The country is divided into six states and two territories. Many islands are also part of the country, such as Tasmania and the Cocos Islands. Over seventeen and a half million people live in Australia. The greatest population of the country occurs in the southeastern states of Australia, especially the states of Victoria and New South Wales.

Some words on this page are highlighted. Can you define these terms?

Earthworm's Cartographic Activities

Your job as a cartographer is to fill in some details on this map of Australia. Refer to an atlas or encyclopedia, the text when labeling, use a sharp pencil. Write small, always print clearly. Refer to the Map Key for symbols and suggested colors. When filling in areas with color, shade very lightly so you don't obscure other features.

States and Territories

Locate and label the following states and territories of Australia:

- New South Wales
- Queensland
- Western Australia
- Tasmania
- Northern Territory
- Australian Capital Territory

Cities

Label Canberra, the country's capital, located in the Australian Capital Territory. Label the state and territory capitals and other cities marked on the map.

Rivers

Color and label the following rivers:

- Murray River
- Parana River
- Flinders River
- Sturt River
- Macintyre River
- Sturt River
- Sturt River

Mountains

Using the mountain symbol, draw in and label these other mountain ranges:

- Blue Mountains
- Macintyre Range
- Blue Mountains

High Elevations

Draw in the mountain on the island of Tasmania.

Decorations

Draw in other, if you like.

Points of Interest

Draw in and label these other points of interest:

- Uluru
- Great Barrier Reef
- Rainforest

Oceans and Seas

With blue, shade along the coastline of the ocean and seas. With capital letters, label:

- PACIFIC OCEAN
- INDIAN OCEAN

Lakes

With smaller letters, label:

- Tasman Sea
- Arafura Sea
- Torres Sea
- Great Australian Bight
- Gulf of Carpentaria
- Base Strait
- Great Barrier Reef
- Sturt River
- Joseph Bonaparte Gulf
- Spencer Gulf

Rivers

Color and label the following rivers:

- Murray River
- Parana River
- Flinders River
- Sturt River
- Sturt River
- Sturt River

Mountains

Using the mountain symbol, draw in and label these other mountain ranges:

- Blue Mountains
- Macintyre Range
- Blue Mountains

High Elevations

Draw in the mountain on the island of Tasmania.

Decorations

Draw in other, if you like.

Points of Interest

Draw in and label these other points of interest:

- Uluru
- Great Barrier Reef
- Rainforest

Map of the Month

Copyright 2000, Map of the Month, East Side Station P. O. Box 2484, Providence, RI 02906-0484. Visit us at www.mapofthemoonth.com



During the Olympic Games, flags from all the participating countries are displayed. This is the flag of Australia, host of the 2000 Olympics. Color it in the appropriate colors.

Our Map Challenge acts like a workshop, taking you through the labeling of this map in detail!

When you start out, the black and white map is blank, as at left. When you are done, it is a colorful work of cartographic art!

Every student will create a unique completed version of the map -- see one version of below!

If you need more copies of the [AUSTRALIA](#) map for your class, click [HERE!](#)

ACTIVITIES!

In addition to the map activities, we challenge you to complete some other activities! In the pages that follow, you can also to complete some math, science, literacy and history-related activities!

Whenever you see our mascot **EARTHWORM**, you will have one of these extra beyond-the-map activities that relate to **AUSTRALIA!**



AUSTRALIA

Places and Geographic Features

Welcome to **Australia**! Australia is the smallest continent, totaling about five percent of the land on earth. Australia is an isolated continent, surrounded by water. It is located in the southern hemisphere and is called the "land down under" for this reason. Australia lies between the Indian Ocean and the Pacific Ocean.

Australia is a very flat continent. It is a vast plateau, eroded over millions of years. Much of the central and western continent is made up of deserts and flat, dry plains. The mountains of Australia are much lower than those of other continents. The Eastern Highlands divide the dry western areas from the more fertile eastern coast. These Highlands are made up of several small mountain ranges of many different heights. They include the mountains of Tasmania.

The coastline of Australia stretches for 23,000 miles and includes many long sandy beaches. The Great Barrier Reef, off the northeastern coast, is the longest coral reef in the world.

In addition to being a continent, Australia is also an independent country. The official name is the Commonwealth of Australia. The country is divided into six states and two territories. Many islands are also part of the country, such as Tasmania and the Cocos Islands. Over seventeen and a half million people live in Australia. The greatest population of the country occurs in the southeastern states of Australia, especially the states of Victoria and New South Wales.

Some words on this page are highlighted. Can you define these terms?

Earthworm's Cartographic Activities

Your job as a cartographer is to fill in some details on this map of Australia. Refer to an atlas or encyclopedia, the text when labeling, use a sharp pencil. Write small, always print clearly. Refer to the Map Key for symbols and suggested colors. When filling in areas with color, shade very lightly so you don't obscure other features.

States and Territories

Locate and label the following states and territories of Australia:

- New South Wales
- Queensland
- Western Australia
- Tasmania
- Northern Territory
- Australian Capital Territory

Oceans and Seas

With blue, shade along the coastline of the ocean and seas. With capital letters, label:

- PACIFIC OCEAN
- INDIAN OCEAN

Lakes

With smaller letters, label:

- Tasman Sea
- Arafura Sea
- Torres Sea
- Great Australian Bight
- Gulf of Carpentaria
- Base Strait
- Great Barrier Reef
- Sturt River
- Joseph Bonaparte Gulf
- Spencer Gulf

Rivers

Color and label the following rivers:

- Murray River
- Parana River
- Flinders River
- Sturt River
- Sturt River
- Sturt River

Mountains

Using the mountain symbol, draw in and label these other mountain ranges:

- Blue Mountains
- Macintyre Range
- Blue Mountains

High Elevations

Draw in the mountain on the island of Tasmania.

Decorations

Draw in other, if you like.

Points of Interest

Draw in and label these other points of interest:

- Uluru
- Great Barrier Reef
- Rainforest

Map of the Month

Copyright 2000, Map of the Month, East Side Station P. O. Box 2484, Providence, RI 02906-0484. Visit us at www.mapofthemoonth.com

During the Olympic Games, flags from all the participating countries are displayed. This is the flag of Australia, host of the 2000 Olympics. Color it in the appropriate colors.

MAP KEY

- Capital
- City
- + Highest Elevation
- ▲ Mountains (brown or green)
- River (blue)
- Lake (blue)
- Uluru (red)
- Great Barrier Reef (brown)
- Rainforest (green)

Australia is home to many unusual animals not found on any other continent. Some of the most famous like the KANGAROO and the KEMALA are marsupials, which raise and carry their young in pouches. Other unique creatures are the TASMANNIAN DEVIL, the FILLIED LIZARD, and the EMU. Name others!

ALONG THE COAST!

Australia has a lot of coastline!

As you label the names of the bodies of water surrounding the continent, use your neatest lettering.

Shade a nice edging of blue along the coastline to make the water stand out.

Neatness is super important! Remember, you are making this map to show other people and have them enjoy, so presentation is everything!



These map details, shown inside the dotted boxes, are taken from your large map that you are working on!



NAME THAT STATE!

When labeling the states and territories on your large map, use **CAPITAL LETTERS**! This will make the names really stand out!



The four states in the southeast are a little smaller. Here is how we label them.

First, size your letters to fit.

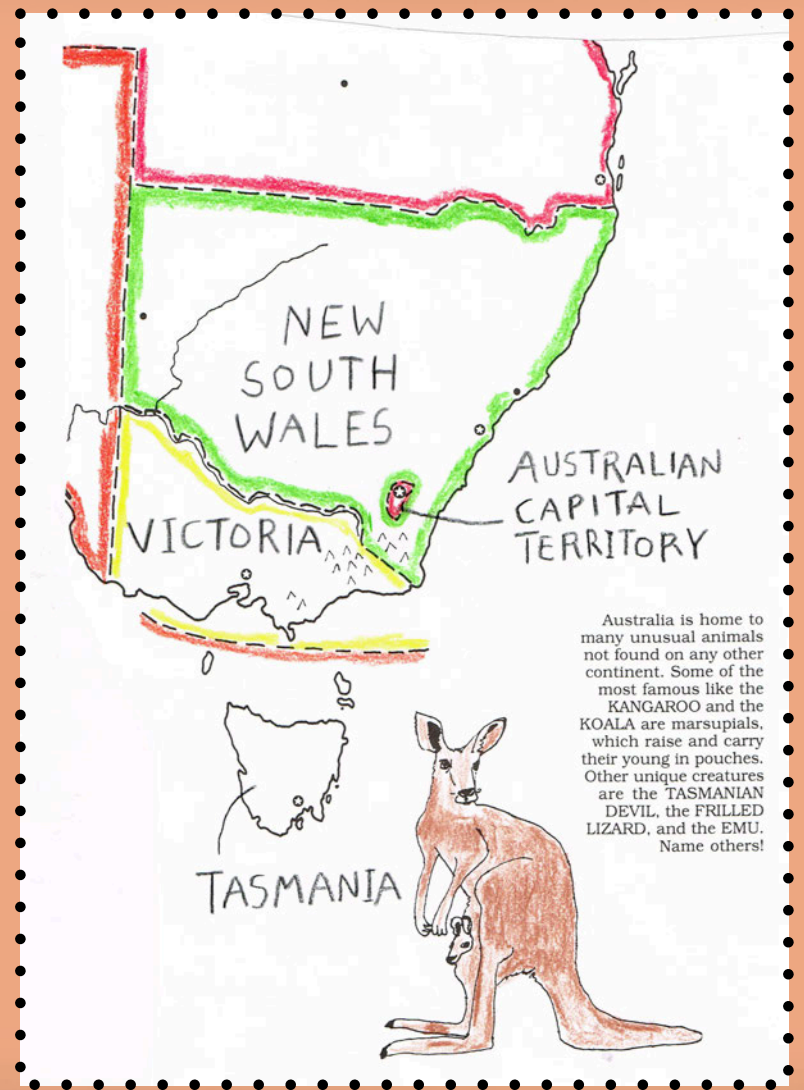
For the smallest areas, make use of a "leader line" to point to the area you are labeling.

The area of **WESTERN AUSTRALIA** is easy to label because it is so big!



ADDING MORE COLOR!

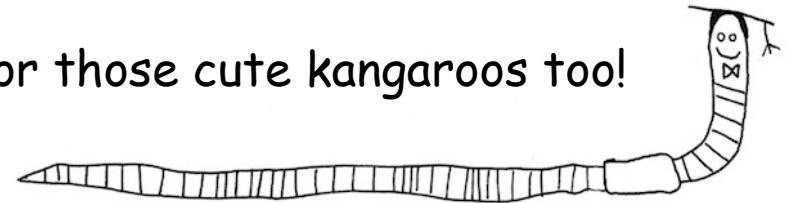
Here's a great way to make the states and territories stand out from each other!



Australia is home to many unusual animals not found on any other continent. Some of the most famous like the KANGAROO and the KOALA are marsupials, which raise and carry their young in pouches. Other unique creatures are the TASMANIAN DEVIL, the FRILLED LIZARD, and the EMU. Name others!

Color the inside edge of the boundary lines in different colors. This leaves plenty of white space for labeling other features on the map: mountains, rivers, cities, etc.!

Color those cute kangaroos too!



ON THE MAP!



Do some research to make a list of the islands in OCEANIA.

How many island countries are there in OCEANIA?

There are islands that are territories or states of other countries: list them and tell with which country do they belong to?



Australia is part of the area that is sometimes called OCEANIA. Sometimes rather than call Australia a continent, people use the term OCEANIA to refer to the region that includes Australia as well as the island countries that surround it.

Oceania is not technically a continent, but some people use the term when referring to the continents (such as ASIA, EUROPE, NORTH AMERICA, and so on.). In this way, these islands can be associated with a specific region.



Simpson Desert

Tanami Desert road



DESERTS of Australia!

There are ten major deserts in Australia.

About 70% of the Australian continent is classified as a desert.

The definition of a desert is that it receives less than 10 inches of precipitation a year. The surface of the Australian deserts can be formed of sand, small stones or large rocks. A desert is a region with very high temperatures, a great deal of evaporation of moisture, and often high winds, conditions that are inhospitable for life. Even though life can be very challenging in a desert environment, some animals and plants have adapted to the harsh terrain!



Photo: DiverDave, Creative Commons

Bridled Nail-tailed Wallaby

The bridled nail-tailed wallaby was once thought to be extinct but was spotted again in 1973. These animals are characterized by their grey and white fur, white stripes with dark borders that run down their backs, and small claw-like spur that is found at the end of their tails. These nocturnal marsupials feed on herbs and a number of flowering plants. There are approximately 600 of these wallabies living today. They have successfully been bred in captivity and it is thought that they will soon be introduced back into the wild.

CREATURES OF THE AUSSIE DESERTS!

Emus in the Simpson Desert



Research to find out what animals live in the deserts of Australia.

Choose three creatures from three different deserts (see next page for a list of deserts!)

Report on their habitat, how they survive without much water, and what they do to protect themselves from the heat!



THE TOP TEN AUSTRALIAN DESERTS!

Great Victoria Desert is the largest Australian desert, located in Western and Southern Australia regions. Rainfall ranges between 200-250 mm every year. Temperatures are 90-100 degrees F in the summer, 68-77 degrees F in the winter, with freezing at nighttime. There are open woodlands covered by various types of grasses and shrubs.

Great Sandy Desert is the second largest Australian desert, located north of Western Australia. It is classified as a hot desert with sparse vegetation, with average temp about 105 degrees F in the summer and 68 degrees F in the winter with frost at night. The evaporation rates are about 15 times faster than the precipitation rates which contributes to the dry climate, sand dunes and small hills.

Tanami Desert is Australia's third largest desert, which is very flat and very isolated. Its harsh terrain is not often visited by people. It receives about 400mm of precipitation annually: this is more than other deserts but the evaporation rate is high because of the high temperatures in that area, reaching as high as 100 degrees F during the summer and 50F in the winter. Many rare and endangered species live here: the freckled duck, grey falcon and the western chestnut mouse.

Simpson Desert is a popular desert for tourists to visit. It contains the world's longest parallel sand dunes. It is extremely hot and dry with minimal rainfall. Wildlife includes reptiles, mammals and birds, all well adapted to the heat.

Gibson Desert is located in Western Australia. The hot climate experiences rainfall between 200-250 mm. There are 362 species of animals (including reptiles, mammals and birds). The land is covered in gravel and is covered by different types of grasses in some places. The majority of people living in this desert are indigenous Australians.

Little Sandy Desert is much smaller than the Great Sandy desert but very similar in terms of landforms, plants, and animals.

Strzelecki Desert has many sand dunes and is home to several types of endangered species. A number of salt lakes located within the desert attract various types of birds.

Sturt Stony Desert is covered by desert gravel made from sandstone, known as "gibber." This desert is home to the carnivorous brush-tailed marsupial rat, also known as the "Kowari".

Tirari Desert is made up of "gibber" plains, sand dunes than run from north to south, and salt lakes. The very high temperatures and very little rainfall contribute to the harsh climate. Vegetation includes various types of shrubs and grass. The Dieri people, an aboriginal tribe, live in this desert.

Pedirka Desert is the smallest of the Australian deserts, with deep red colored sand and dense woodlands.

GREAT BARRIER REEF



The Great Barrier Reef is located off the coast of Northeastern Australia and is the largest coral reef system in the world. The Great Barrier Reef is about 1800 miles long and is made up of about 2,900 different coral reefs--it's so big it can be seen from space!

In addition to being an incredibly diverse ecosystem, the Great Barrier Reef is a very popular destination for tourists. There are 900 small islands located along the Great Barrier Reef and over 100 of those islands can be visited by tourists. Vacationers can enjoy beaches, rainforests, and incredible wildlife.

This is a satellite image, taken from space, of part of the Great Barrier Reef adjacent to the Queensland coastal areas of Airlie Beach and Mackay.

CORAL COLONY!

Corals are living organisms that live underwater. Although they look a lot like underwater plants, they are actually animals.

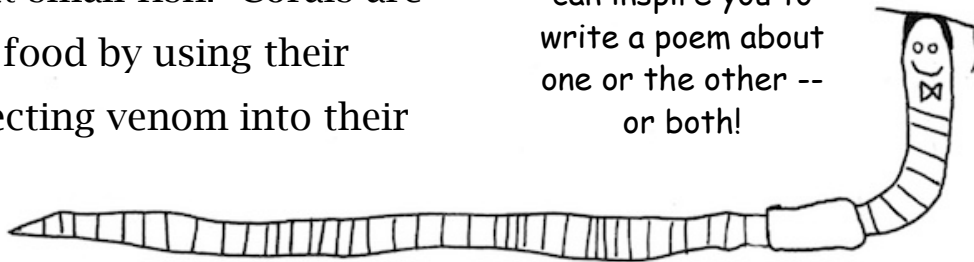
Corals can come in all shapes and sizes and tend to be quite colorful. Corals vary in texture and can be soft or hard.

The shape of a coral is dependent on the environment around them: they respond to the amount of sun and waves that they are exposed to. They tend to live in colonies and most need to be in sunlight and shallow waters to grow.

Corals feed on many different organisms. Some eat small zooplankton whereas some can even eat small fish. Corals are able to trap their food by using their tentacles and injecting venom into their prey.



The two corals shown here are named for what they resemble! Table Coral (above) and Brain Coral (at right) can inspire you to write a poem about one or the other -- or both!





Coral reefs are important ecosystems that provide homes for a large variety of animals.

Sponges live among the coral on the reef and help filter the water around them. Fish, crustaceans, jellyfish, turtles, and mollusks are some of the animals that live around coral reefs.

Photographer Richard Ling had to be underwater to take this amazing photo of the Blue Starfish resting on hard Acropora coral.

This was shot at the Lighthouse, Ribbon Reefs, Great Barrier Reef, Australia.

Many types of corals play a role in forming reefs.

Coral reefs are formed on continental shelves thousands of years ago and the reefs build up as sea level rises over that area. New coral continues to grow over dead coral.

There are a number of different types of reefs. As the name suggests, the Great Barrier Reef is an example of a barrier reef. A barrier reef is a reef that is separated from the mainland by a deep channel of water or by a lagoon.



Do some research to describe how corals grow in a reef. Choose three different kinds of coral and tell about them. Research to write about what other kinds of creatures live in a coral reef.



*A scuba diver
observes a
giant clam in the
Great Barrier Reef!*

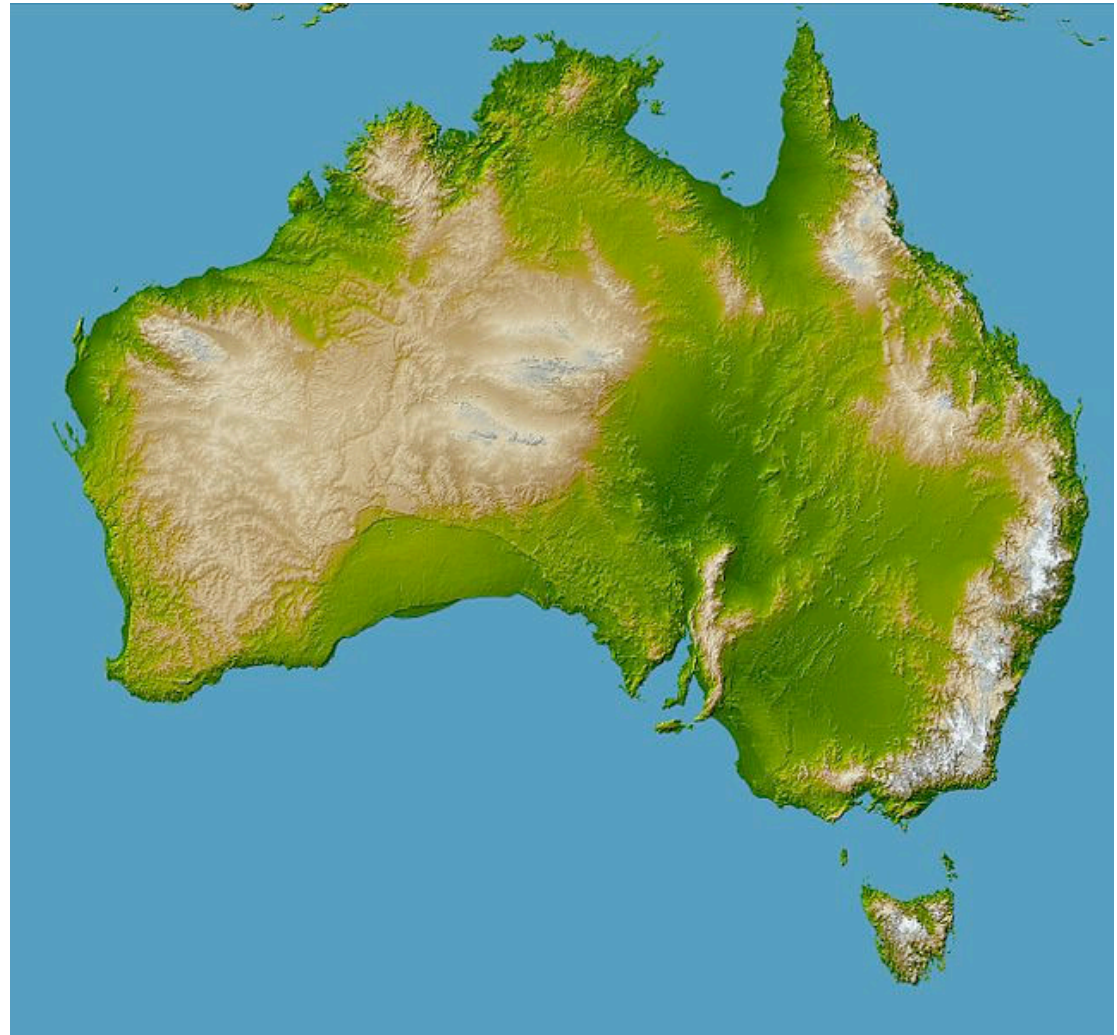
Great Dividing Range

The Great Dividing Range of Australia is the third longest mountain range in the world.

The Great Dividing Range, also known as the Eastern Highlands, runs along the entire Eastern coastline of Australia.

The Great Dividing Range has several mountains that are over 7,000 feet tall. The tallest mountain is Mount Kosciuszko which stands at 7,310 feet.

The Great Dividing Range is 2,200 miles long and spans over an area of 948,500 square miles. Along the vast length of this mountain range, there are many different national parks and state forests. The Great Dividing Range is especially impressive because much of its area has been untouched by modern civilization and offers beautiful views of the natural world.



The Great Dividing Range is a great place for people to view wildlife. There are a number of different animals and plants that can be seen in the mountain range. Along the Great Dividing Range, there are lots of different hollow trees, gorges, and gullies for animals to inhabit. Since there are also many grassy areas along the range, animals have large grazing spaces. A wide variety of mammals and birds live in the Great Dividing Range.



This mountain range is 2,200 miles long. How does that compare to: The width of the United States, or the continent of Europe? What two mountain ranges in the world are longer? Convert the length of the Great Dividing Range to kilometers, and the height of Mt. Kosciuszko to meters!

Australian Plains

A plain is defined as a relatively flat, broad area of land. Plains may be slightly hilly, not absolutely flat. There are plains in Eastern and Western Australia.

In Eastern Australia, there are the **Eastern Coastal Plains** the border the Pacific Ocean, Great Dividing Range and Tasman Sea. The Easter Coastal Plain is a narrow strip of land that is very fertile with temperate forests and a large variety of plant life. Most of the population of the continent lives in this area.

In Western Australia, there is the Western Plateau and Central Plains. The **Western Plateau** is an area of the continent that is covered with plains as well as deserts. This area takes up the majority of the Western half of Australia. The plains on the Western Plateau are red sandy plains and sand ridges. Western Australia also has the Central Plains. The **Central Plains** are also referred to as the Central Lowlands and is one of the largest areas of internal drainage in the world.



Photo: John O'Neill

The Benambra and Omeo Plains taken from Mt. Blowhard, in Victoria, Australia

Australian Seasons and Weather!

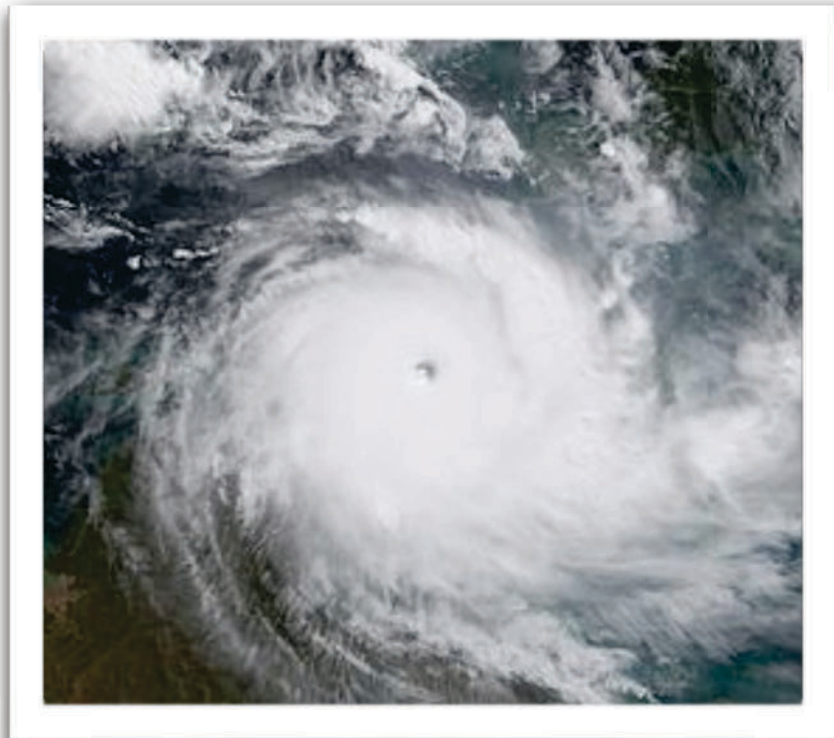
The Australian seasons are opposite to the ones that we are used to. In Australia, summer occurs from December to February, autumn occurs from March to May, winter occurs from June to August, and spring occurs from September to November.

In the United States, our seasons are different from Australia because we are located in the Northern Hemisphere and Australia is in the Southern Hemisphere. During our summer months, June to August, the Northern Hemisphere is tilted towards the sun which means we get more hours of daylight. Since the Northern Hemisphere is tilted more towards the sun, this means that the Southern Hemisphere is tilted away from the sun and they get fewer hours of sunlight.

In Australia, the six month period between November and March is considered the rainy season. During this period, the temperature ranges between 86°F and 122°F. The areas around the tropics may sometimes see cyclones and monsoons. The other six month period between April and October is the dry season and the average temperature is about 68°F. During the dry season, it is not uncommon for droughts to happen.



Two words associated with weather of Australia are **BILLABONG**, shown above, and **CYCLONE**, shown from the air at right. Define these terms.



A tropical rainforest is defined as an ecosystem that experiences a large amount of rainfall and high average temperatures. Tropical rainforests are typically located close to the equator, between the Tropic of Capricorn and the Tropic of Cancer.

Temperate rainforests are forests that receive heavy amounts of rain and mild temperatures.

With both tropical and temperate rainforests, tall trees provide a canopy that blocks out the majority of sunlight that reaches the ground.

Rainforests are extremely important. First they provide homes for different plants and animals. On Earth, they are home to over 50% of all living things! Since about 70% of the plants in the rainforest are trees, rainforests are responsible for producing almost half of the Earth's oxygen.



Daintree Rainforest

Photo: Adz, [Creative Commons](#)

RAINFORESTS

Rainforests are unique because they are composed of 4 layers.

The first layer is made up of emergent trees which are very tall (between 100-240 feet tall) and create canopies that grow above the forest. The next layer is the upper canopy which is made up of trees that are shorter than the emergent trees (60-120 feet tall). Sunlight is able to reach this layer very easily which means that there is a lot of food available to the animals that live at this layer. The layer beneath the upper canopy is the lower canopy, with trees that are about 60 feet tall. The two layers above the lower canopy create so much shade that this layer doesn't get any sun. The fourth layer is the floor of the forest which had some bushes and small plants. Very little light makes it down to the floor.

RAINFORESTS IN AUSTRALIA

There are two large rainforest areas that can be found in Australia: Gondwana Rainforests and the Daintree Rainforest:

The Daintree rainforest is located along the Northeast coast of Australia.

The Gondwana rainforests are located along the Eastern coast of Australia.



The Daintree forest is home to a number of rare plants that have been in the forest since ancient times. Along with the unique plant life that the forest has, it also has the Daintree Important Bird Area which contains a wide variety of birds and provides a safe place for them to live.

This rainforest also has waterfalls, mountain ranges, and gorges that contribute to its natural beauty.

MATH MOMENT

The Daintree rainforest is one of the largest tropical rainforests on the continent, covering about 1200 square kilometers of land. Can you convert this measurement to square miles?



Gondwana Rainforests

The Gondwana rainforests are located along the Eastern coast of Australia. It is made up of approximately 50 rainforest reserves that used to be the great rainforests of Australia. Although the rainforest makes up a very small percentage of the area of the continent, the Gondwana rainforests is a home to over 200 rare and endangered species and a diverse group of flora and fauna. Within the Gondwana rainforests, there are over 20 national parks and numerous nature reserves. The rainforests are very accessible to the public, many roads from nearby towns lead into different parts of the forest.



Tall trees in the rainforest form the uppermost of the four layers of growth. This giant Gmelina tree is approx 50 metres tall and approximately one thousand years old.



The lowest layer of the rainforest, the floor of the forest, does not get much sun. Here is an example of a diverse set of subtropical rainforest flora is preserved along Brindle Creek, in the Queensland rainforest area.

AUSTRALIAN ENDANGERED ANIMALS!

Numbat

This small endangered marsupial is characterized by its reddish-brown coat and powerful forearms with claws.

The numbat feeds primarily on termites and uses its sharp claws to dig into termite holes. They also have long, sticky tongues that help them pull the termites from the ground. Unlike most marsupials, the numbat is not nocturnal, meaning it stays out during the day. There are now only about 2000 of these animals and they are found exclusively in Western Australia.



Attribution: Eva Hejda <http://fotos.naturspot.de/>

Northern hairy-nosed wombat

The Northern hairy-nosed wombat considered one of the world's most endangered mammals. This creature is a sturdily built and has very powerful limbs. These wombats have short brown coats and fur on their noses-they used to be hunted for their fur. They are one the largest burrowing animals in the world and they use their strong claws to help them dig. Like most marsupials, these wombats are nocturnal and they feed at night on plants and grasses. They tend to be solitary creatures. There are only about 65 left in the world which means that this species is critically endangered.

The Endangered Orange Bellied Parrot

The orange bellied parrot is a small colorful parrot that has orange, green, blue and yellow plumage. It is found exclusively in Southern Australia and Tasmania. The orange bellied parrot makes its nest in eucalyptus trees and feeds mainly on seeds. They have a very unique call, and when they are startled they make a buzzing sound.

Currently, there are only 45 of these parrots to be known to be living in the wild and about 300 living in captivity. The species is critically endangered mainly because their habitats are disappearing as more of trees are cut down due to urban development. They are also at risk for a parrot disease that originated in Australia.



Orange-bellied Parrot (*Neophema chrysogaster*) female, Melaleuca, Southwest Conservation Area, Tasmania, Australia

Photo: JJ Harrison, [Creative Commons](#)



Endangered friends

Do some research and choose three other Australian animals that are endangered. Describe the habitat of each, how they survive, and what efforts are being made to help them .

Originally it was known only from a single specimen collected in 1839 from an unknown location in Western Australia. No others came to light until the 1950s when a Perth schoolboy found one walking across a road and took it to a wildlife show. Its significance was soon recognized, and *Pseudemydura umbrina* was resurrected as a living species.

The Western swamp turtle, also known as the short necked turtle, grows no longer than about 6 inches that is found in bodies of freshwater. These turtles have different colorations depending on how old they are, ranging from black, yellowish brown, or even almost maroon. Their neck and head are covered in a number of horn-like projections.

There are only about 25 of these turtles still around today which makes them a critically endangered species.



The Western Swamp Tortoise
(latin name Pseudemydura umbrina):
Australia's rarest reptile

Outdoor Activities in Australia

The Australian climate lends itself well to so many different outdoor activities!

All the beaches located along the coasts allow for swimming, fishing, kayaking, surfing and scuba diving.

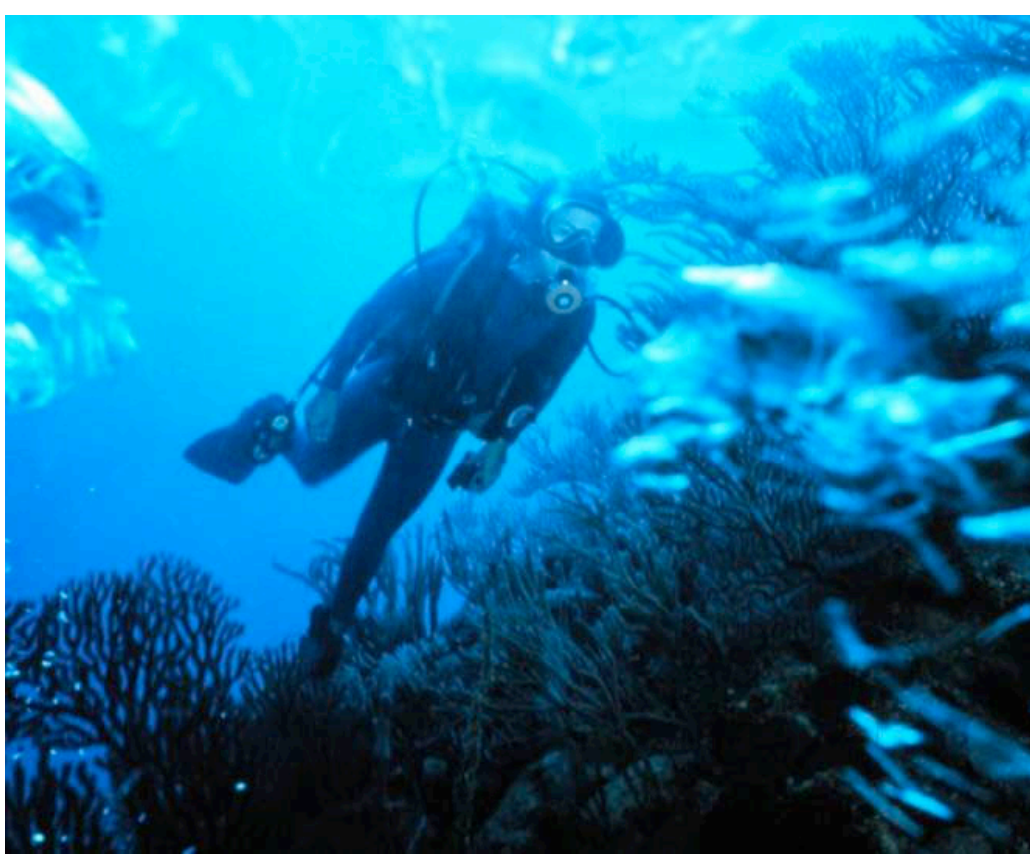
With the rainforests and mountains scattered across the continent, hiking is a very popular way for people to explore the wildlife of Australia. Many of the national parks have accommodations for people to rent so they can stay and explore for longer periods!

Another activity that is very popular is driving across the desert outback.

For more adventurous people, skydiving, rock climbing, and cave exploring are some action sports that many enjoy.

Although many people think of Australian outdoor activities being performed in the warm weather, they often forget about the cold weather activities that Australia has to offer.

Some of the mountains in Australia have snow and are popular places for people to downhill ski, cross country ski and snowboard.



Uluru, also known as Ayers Rock, is one of Australia's most iconic natural landmarks.

This huge stone is located in central Australia and is an inselberg, meaning island mountain.

One of the memorable features of this sandstone structure is its distinctive red color that seems to change depending on the time of day.

ULURU



See from the air, above, you can see the roads that encircle the giant rock.

Uluru is over 1,000 feet tall, over a mile wide, and over 2 miles long.

It is thought that Uluru is over 600 million years old!



Sydney is the capital city of the state of New South Wales. Sydney is located along the east coast and has the largest population of all the cities in Australia and Oceania. The very first people to live in the area where Sydney is today were indigenous Australians who came from Southeast Asia and Northern Australia. Europeans eventually came to the area and it was set up as a penal colony; the United Kingdom sent their prisoners to Sydney. The UK stopped sending prisoners in 1850 and the city's population began to grow and the city began to develop.

Nowadays, of the over 4 million people who live in the city, 1.5 million of those people were born somewhere other than Australia. This makes Sydney a very diverse city - over 250 different languages are spoken and to many people, English is their second language. The city is very open to people from all walks of life.

There are many tourists who visit the city as well. Almost 3 million tourists visit each year. Sydney offers many tourist attractions, natural and man-made. Many tourists visit Sydney Harbor, the Royal Botanical Gardens, and many of the beaches that are located around the city. As for man-made tourist attractions, people enjoy visiting the Sydney Opera House, the Sydney Harbor Bridge, Sydney Tower, and the Queen Victoria Building.



SYDNEY, AUSTRALIA



TASMANIA

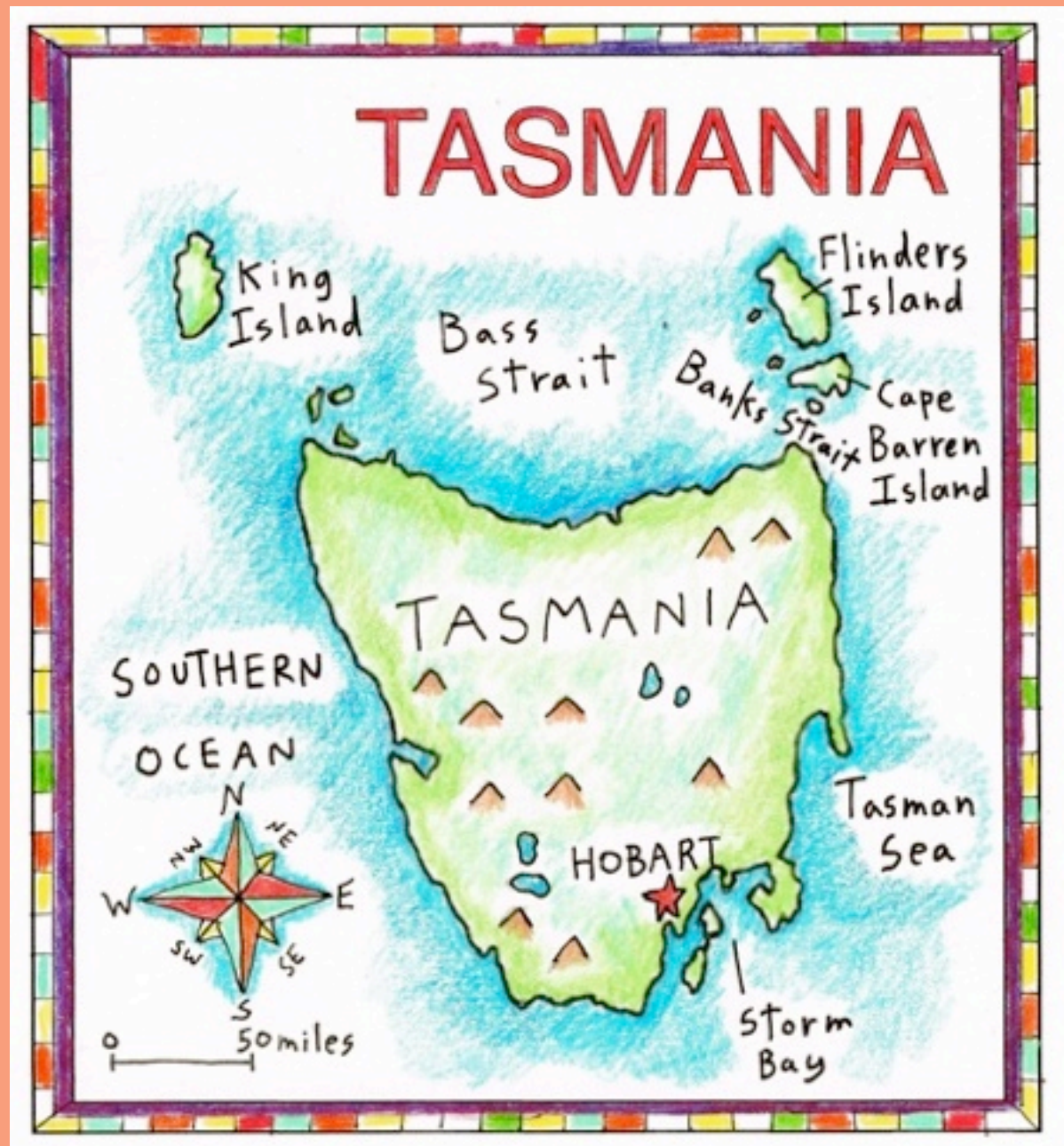
TASMANIA is the 26th largest island in the world! Lots of water surrounds this island! A smaller waterway is called the Bass Strait: this separates Tasmania from Australia. It would be a long way to swim from one to the other.

You might be surprised that TASMANIA is NOT just one big island.

It includes 334 surrounding islands! Together they make up the island state, part of Australia.

The original language of TASMANIA was called **Tasmanian**. A more native way of saying it would be to call it the **Palawa** language.

Did you know that TASMANIA's nickname is "Tassie"?



Make a compass rose for your map by following the directions [HERE!](#)

ADD TEXT

Kangaroos

The kangaroo is one of the animals most commonly associated with Australia. Kangaroos are marsupials, a species of mammal most commonly found in Australia. Many marsupials have a pouch that is used to carry their young.

There are a number of different kinds of kangaroos that can be found in Australia. All types of kangaroos have similar diets and they are herbivores.

One interesting thing that kangaroos do is fight with each other. Kangaroos will box with other and they will push, swat and kick one another.



Research and write an essay about kangaroos. Here are some guidelines:
What are the different kinds of kangaroos that can be found in Australia?
What is a herbivore? What kinds of food do kangaroos like to eat? Where do they live, in what kind of terrain?



Kangaroos have large feet and tails, which allow them to jump around from place to place.



Kangaroo Island is located off the coast of South Australia and is the capital city of South Australia. Kangaroo Island is the third largest island in Australia with only Tasmania and Melville Island being larger.

There are almost 4,500 people who live year round on the island, and over 140,000 tourists visit the island each year. Many of the island's popular tourist attractions involve the local wildlife and natural landmarks. People can travel from the mainland to Kangaroo Island by ferry or airplane. Kangaroo Island's economy is very dependent on agriculture. The island produces products such as grapes, honey, wool, grain and meat.



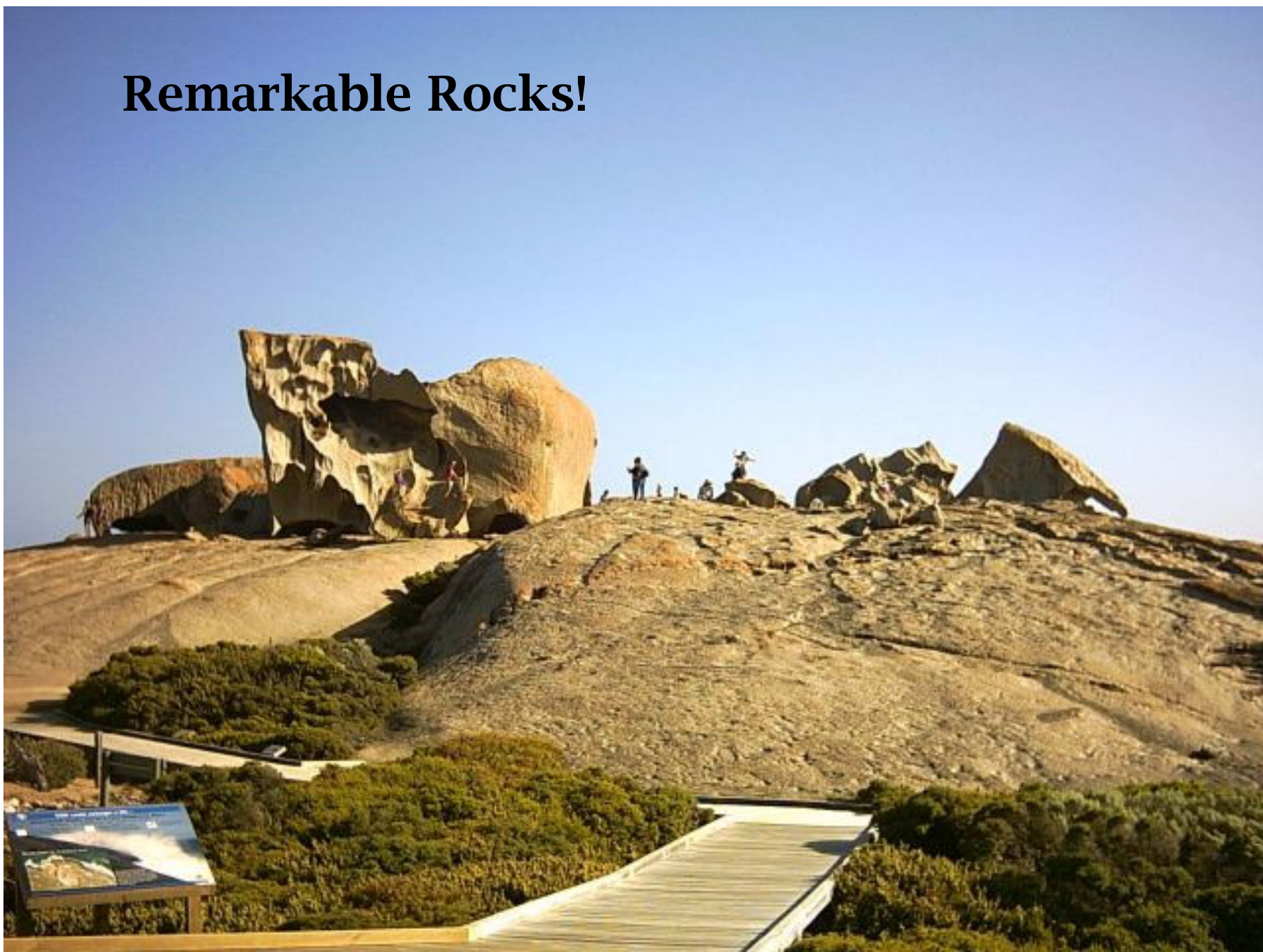
Kangaroo Island

Admiral's Arch, in Flinders Chase National Park is one of the many popular natural destinations on Kangaroo Island.

Research to find out other wonderful places that you might like to see if you visited this island! List and describe them in a small essay. Add information about how you would get there!



Remarkable Rocks!



One of the favorite things to experience in Kangaroo Island's Flinders National Park are what is known as Remarkable Rocks. Fun to photograph and climb!

AUSSIE TREATS!

One snack that is popular in Australia, especially with children, is Fairy Bread. Fairy bread is a treat that consists of white bread that is covered in butter and bright colored sprinkles. It is very popular to serve fairy bread at children's birthday parties.

FAIRY BREAD



Vegemite is famous for being a very popular product that can be found in Australia. Vegemite is a paste that is made from brewers' yeast and can be used as a spread on toast, sandwiches and crumpets. Vegemite on toast is very popular in Australia. Vegemite is very savory and tastes salty and bitter. *Vegemite has a very unique taste and to North Americans who have never tasted it before, it can be very unappealing!*



TIM TAM COOKIES

A very popular snack that comes from Australia is Tim Tam cookies. Tim Tams are cookies that are made up of two layers of chocolate malted cookies with a chocolate crème layer in the middle. The Tim Tams are also covered in chocolate. These cookies are very popular in Australia and about 35 million packs are sold each year! These cookies have become so popular that they can be found in grocery stores throughout the world now.

Vegemite



The Australian flag is made up of three components

FIRST -- In the top left corner, there is the flag of the United Kingdom.

SECOND -- In the bottom left corner, there is a seven pointed star called the Commonwealth Star. The seven points represent the six states of Australia and the future territories of Australia.

THIRD -- Along the right half of the flag, there is the Southern Cross constellation. The Southern Cross can be seen very easily in the Southern Hemisphere and the constellation has been used to represent Australia since it became a British settlement.



Australian Flag



There are several other national flags that are similar to Australia's.

What are the countries that have similar flags?

Why do you think that the flag of the United Kingdom is included on the Australian flag?

What is a constellation?

Boomerangs were originally from Australia and were used by the native Aborigines to hunt. The curved shape of the boomerang and the special shape of the arms allow it to fly.



Traditional Boomerang



What types of animals were hunted with the original boomerangs?

What is so special about that shape of the boomerang that makes it fly so well?

What material were the original boomerangs made of?

When the boomerang is thrown, it spins and can reach speeds of almost 70 miles per hour. Before hunters had bows and arrows in the 1800s, the boomerang was used to hunt for food.

Although boomerangs aren't used for hunting nowadays, they are mostly used for sport and souvenirs.



Modern Boomerangs!