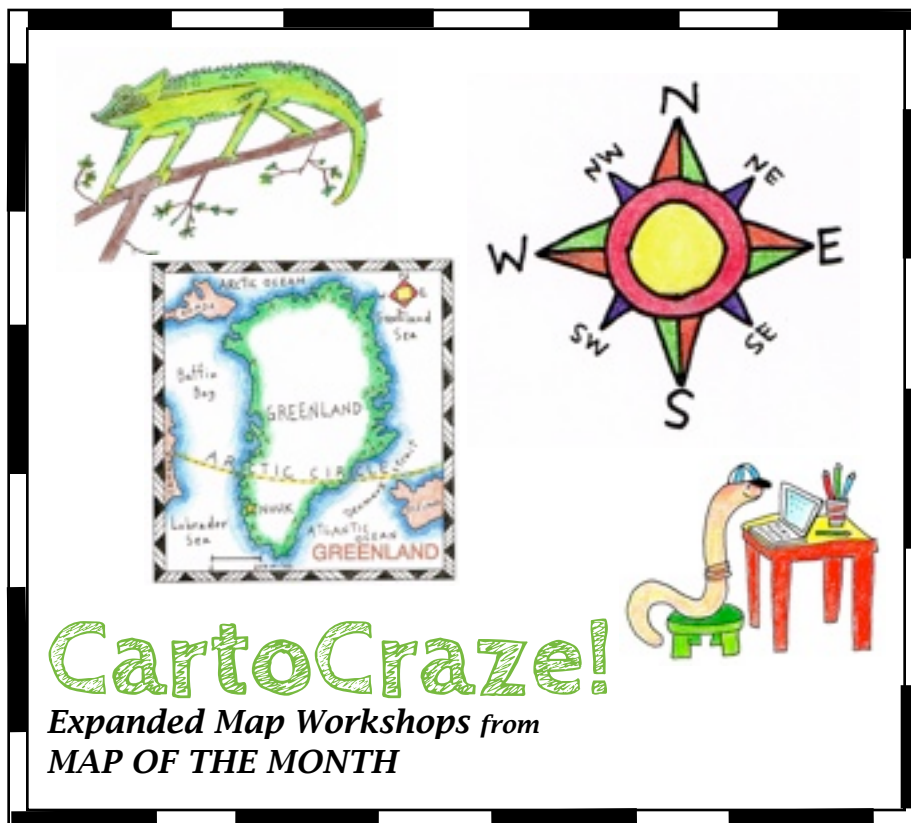


PHILIPPINES



CartoCraze!

Expanded Map Workshops from
MAP OF THE MONTH

CartoCraze!

Expanded Map Workshops

This PDF file of the PHILIPPINES is

© Copyright 2015, Map of the Month

P. O. Box 2484

Providence, RI 02906

888 876 6277

www.mapsfortheclassroom.com

ISLANDS



An island is a piece of land surrounded by water. An island can be as tiny as a spot of land at the center of a freshwater lake, only large enough for a few plants. Alternately, it can be very large, like Greenland, surrounded by salt water ocean.

The actual foundation of an island is below water. Many islands in the deep ocean are the tips of volcanoes. Other islands emerge from the Continental Shelf.

The topography of an island is influenced by its position on Earth. Its temperature, climate, flora and fauna and its size are determined by its location. Some islands are uninhabited, others are home to millions of people. An island can be isolated and far away from other pieces of land, or it can be part of a group of islands.

Throughout history, islands have captured the imaginations of humans. Explorers in the early history of the civilized world risked their lives to visit islands that were yet unknown. People choose islands as a destination, to relax in areas that have easy access to water. People love movies about islands! Robert Louis Stevenson's book TREASURE ISLAND, published in 1883, is still popular today with readers around the world. There is something very fascinating about a piece of land that has a continuous coastline.....



ISLAND TERMS AND THEIR DEFINITIONS!

It is impossible to talk about islands, or learn about them, without knowing some terms that relate to islands. Here are just a few terms! Can you come up with other terms?



DESERT ISLAND An island not inhabited by humans.

ATOLL A coral reef shaped like a circle or ring and is filled with water. This is usually the tip of an extinct volcano.

COASTLINE The land along the outer edge of an island, where the land meets the water.

ARCHIPELAGO A chain or group of islands

BARRIER ISLAND An island formed of dunes, made of flat or lumpy areas of sand parallel to a coastline.

PENINSULA A piece of land that is surrounded by water on three sides but connected to mainland.

GULF A large bay that is connected to the ocean or larger body of water.

BAY A large indentation on a coastline that is connected to an ocean or lake

LAGOON A shallow body of water separated from a larger body of water by coral reefs or barrier islands.

BEACH Land along the coast of an ocean, sea, lake, or river consisting of loose particles made of sand or rock.



The following presentation is an introduction to the islands of the PHILIPPINES, with guidelines about making a map, as well as some information about its geography, people and animals.

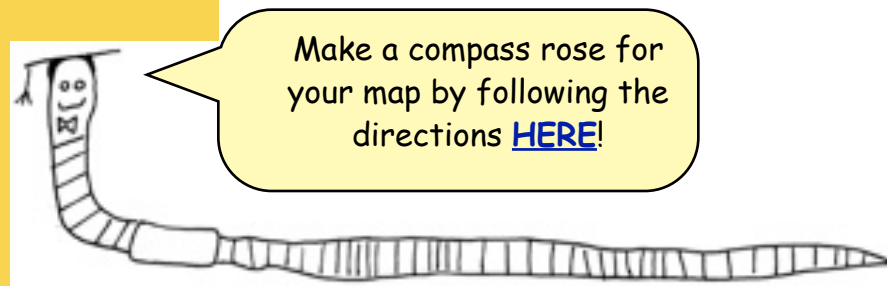
THE PHILIPPINES

The Philippines is an island country in the western Pacific Ocean. It is part of the continent of ASIA, and part of the region called Southeast Asia.

There are a huge number of islands in this archipelago: a total of 7,107! The length of coastlines in the islands adds up to about 22,529 miles.

As you can see by the coloration of our map at right, the Philippines is divided into three major groups of islands: Luzon, Visayas, and Mindanao. These three groups are also divided into regions, provinces, cities, and municipalities, which are further divided into barangays. There are 76 provinces, 60 cities, 1,544 municipalities, and 41,921 barangays in the Philippines.

The climate of the Philippines is tropical and storms are common in the rainy months. There are often monsoons and typhoon storms. Along with these storms come flooding and dangerous winds. Storms are more common in the northern islands than in the southern islands.



Make a compass rose for your map by following the directions [HERE!](#)

I AM PROFESSOR EARTHWORM!



WATCH OUT FOR THE VOLCANO!

A warning
signal of ash
came out of
Mount
Pinatubo
before the
actual
eruption in
1991!

The islands of the Philippines are both volcanic and covered with rainforest. Typhoons are common and very destructive storms in these islands! In 1991, the second largest eruption of the 20th century occurred on Mount Pinatubo on the island of Luzon.

Luckily there was some warning when the volcano spewed ash several days before! Tens of thousands of people from three nearby provinces had to be evacuated. Many died when heavy ash covered and collapsed their homes. What made the eruption worse for the area was that a TYPHOON arrived almost at the same time as the eruption, combining to make an ash and water disaster. This disrupted the land and rivers for months and years to come. Some nearby rivers and towns never recovered, and people had to be relocated to other areas to live. After 2010, a crater lake has formed in the dome of the volcano where a huge depression has formed.

Philippine Eagle

The Philippine Eagle is very majestic in appearance.

It measures up to 3-1/2 feet in length, and is one of the largest eagles in the world.

Its striking brown and white head plumage gives it a distinctive appearance.

It is also known as the Monkey-Eating Eagle although this name is not entirely accurate: this carnivorous creature also consumes other birds, rats, lemurs, squirrels and even some reptiles.

This national bird of the Philippine Islands is highly protected due to its endangered status. A powerful raptor, the Philippines Eagle has no natural predators in the wild, but is threatened by humans instead.



What a majestic guy!

Philippines

PRINT THIS PAGE:
COLOR AND LABEL THE MAP, BOTH
LANDFORMS AND WATER.

ADD A COMPASS ROSE
TO YOUR MAP!

COLOR
THE PHILIPPINE EAGLE!



PHILIPPINES



Philippine Eagle

VOCABULARY WORDS

Turn your map over and define
these words!

plumage
national
emblem
powerful
habitat
predator
raptor
carnivore
threatened
canopy

SPELLING WORDS

claws
whistle
agile
flight
shaggy
pair
enormous
perch
soar
protected
majestic



Philippine Eagle

JEEPNEY CULTURE!

After World War II, the American troops left behind or gave away a surplus of jeeps and other army vehicles. People in the Philippines (Filipinos) painted and decorated the vehicles and set them up as buses. The word “jeepney” was invented as a name. No one is quite sure if the word is a mix of jeep and jitney (another kind of vehicle), or whether it was just a clever fun-sounding name. A symbol of Filipino public transportation, they are known for their gaudy paint and lively signs.



1. Draw a picture of your ideal jeepney!
2. Within the Philippine islands, there are many divisions, regions, provinces, cities, municipalities, and barangays. What are the divisions called where you live, starting with the term CONTINENT?

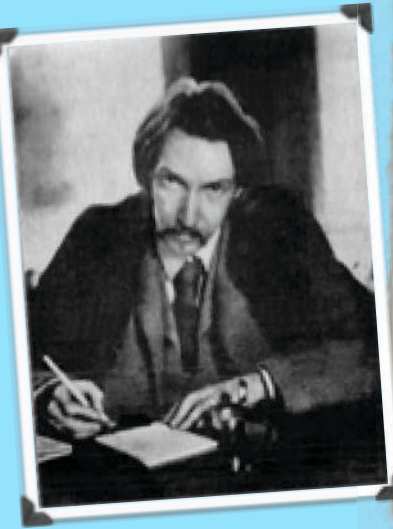
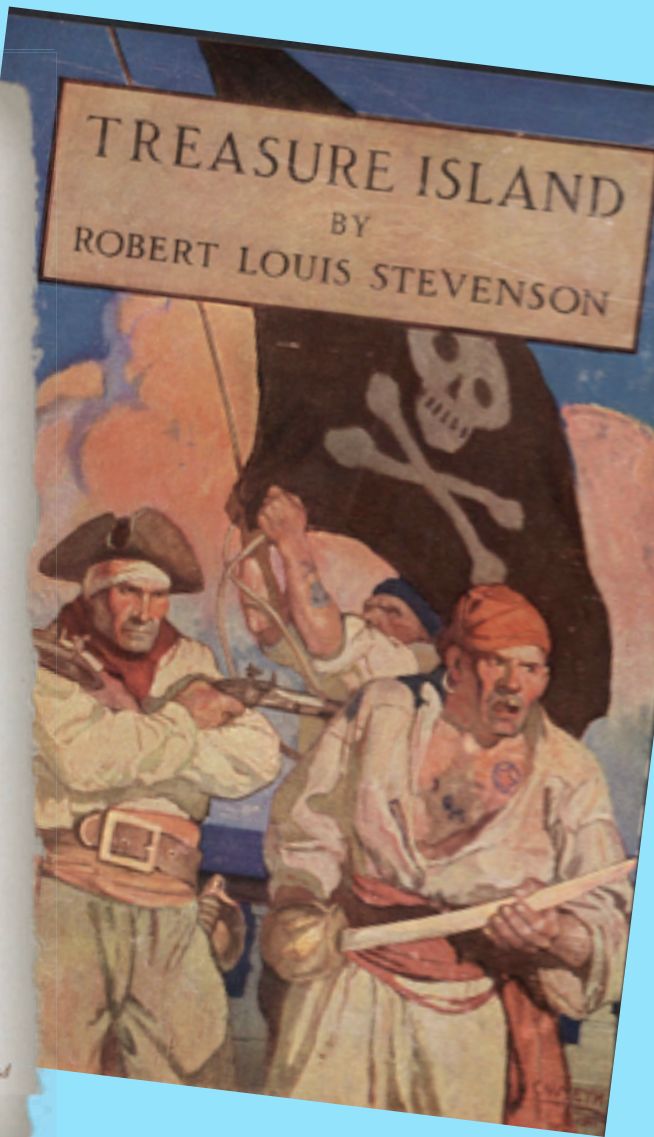


The oldest post-war jeepneys are getting scarce, and those that are still on the road use diesel fuel, which contributes to pollution. Since the 1950s other manufacturers have been making bus-like vehicles that are called jeepneys too, and they are better built and are better for the environment.

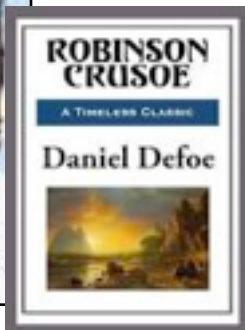


ISLAND READING LIST!

In 1883, Robert Lewis Stevenson's exciting book **TREASURE ISLAND** was published. Adventure! Pirates! Treasure and.... the dreaded **BLACK SPOT!** Stevenson drew his own fictional island map when he was writing his book to help him envision the action of his novel. You can see his map at right!



CLASSIC ISLAND RELATED BOOKS



- TREASURE ISLAND Robert Louis Stevenson
- ISLAND OF THE BLUE DOLPHINS Scott O'Dell
- THE MYSTERIOUS ISLAND Jules Verne
- THE LITTLE ISLAND Golden MacDonald
- ISLAND BOY Barbara Cooney
- ROBINSON CRUSOE Daniel Defoe

Do you want to make your own Treasure Map? This map gives you a head start because some details have already been drawn in. It's up to you to finish drawing, labeling and coloring your map. Lastly, you can write detailed directions on how to get to your hidden treasure!

Be sure to read through the following instructions before you begin. This way, you won't miss any suggestions that can add interest to your map. Be as neat as possible when creating your map. Use your imagination and add those of your own!

YOUR THEME
Decide first what your theme will be: is your map a pirate map, or an adventurer's guide? You can create a story of why the map was made. Or you can make a map to go along with a story you've read. What is your treasure, or your final destination—jewels, food, toys or money's worth? It's up to you!

LABELING and ADDING COLOR
When drawing the outlines of your map, labeling place names or creating symbols, a regular pencil works best. After labeling, you can add many colors to your map. Colored pencils are best, although crayons or markers would be fine. Remember to use appropriate colors, such as blue for water, green for forest.

GEOGRAPHIC DETAILS
What will the landforms on your map look like? What will the surrounding bodies of water be? When drawing in coastlines, use as much of the space as possible. If the land area is very small you won't be able to draw in details easily.

- Your map can depict an island, surrounded by water. Your coastline won't touch any of the borders of the map.
- You can draw a small outline of a larger piece of land. To do this, extend the coastline to the border(s) of the map.
- Your map can show several islands of varying sizes.
- When drawing, include some waterways and geographic details to make your coastline more interesting. Show about peninsulas, lagoons, cape gulf, bay, delta, beach.

If you are unsure of the meaning of these terms, look them up in a dictionary or encyclopedia.

MAP KEY
Some symbols have been shown in the Map Key, representing features of the land or water. Add these to your map. Invent new symbols for the Map Key, then draw them in on the map.

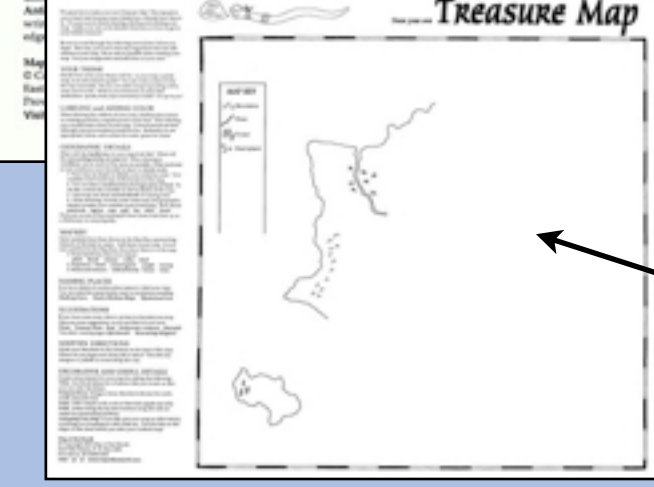
- Some landforms that occur inland: plain, desert, volcano, valley, hill
- Vegetation: forest, coastal grass, jungle, swamp
- Man-made features: railroad tracks, house, mine

NAMING PLACES
It is fun to think of creative place names to label your map. You can make the names funny, scary or mysterious sounding: Skulltop Cove, Mist of Broken Ships, Mysterious Cove.

ILLUSTRATIONS
If you have some time, draw a picture to decorate your map. Here are some suggestions, or you can think of your own: Pirate Treasure Chest, Boat, Underwater creature, Mermaid, Treasure-wearing sign, Quicksand!, Max-wating Alligator!

WRITTEN DIRECTIONS
Write your directions to the treasure on the back of the map. Where do you begin and what path is taken? Describe any dangers or pitfalls to avoid along the way.

DECORATIVE AND USEFUL DETAILS
Create extra interest for your map by adding the following:
Title: Use block letters for whatever title you invent so that you can color the letters.
Compass Rose: Design a fancy direction indicator for north, south, east and west.
Scale: Add a simple scale, such as One inch equals one mile.
Grid: Add lines to the top and bottom of the map so that you can



BLANK MAP!

COMPLETED MAP!

Make your own TREASURE MAP!.....

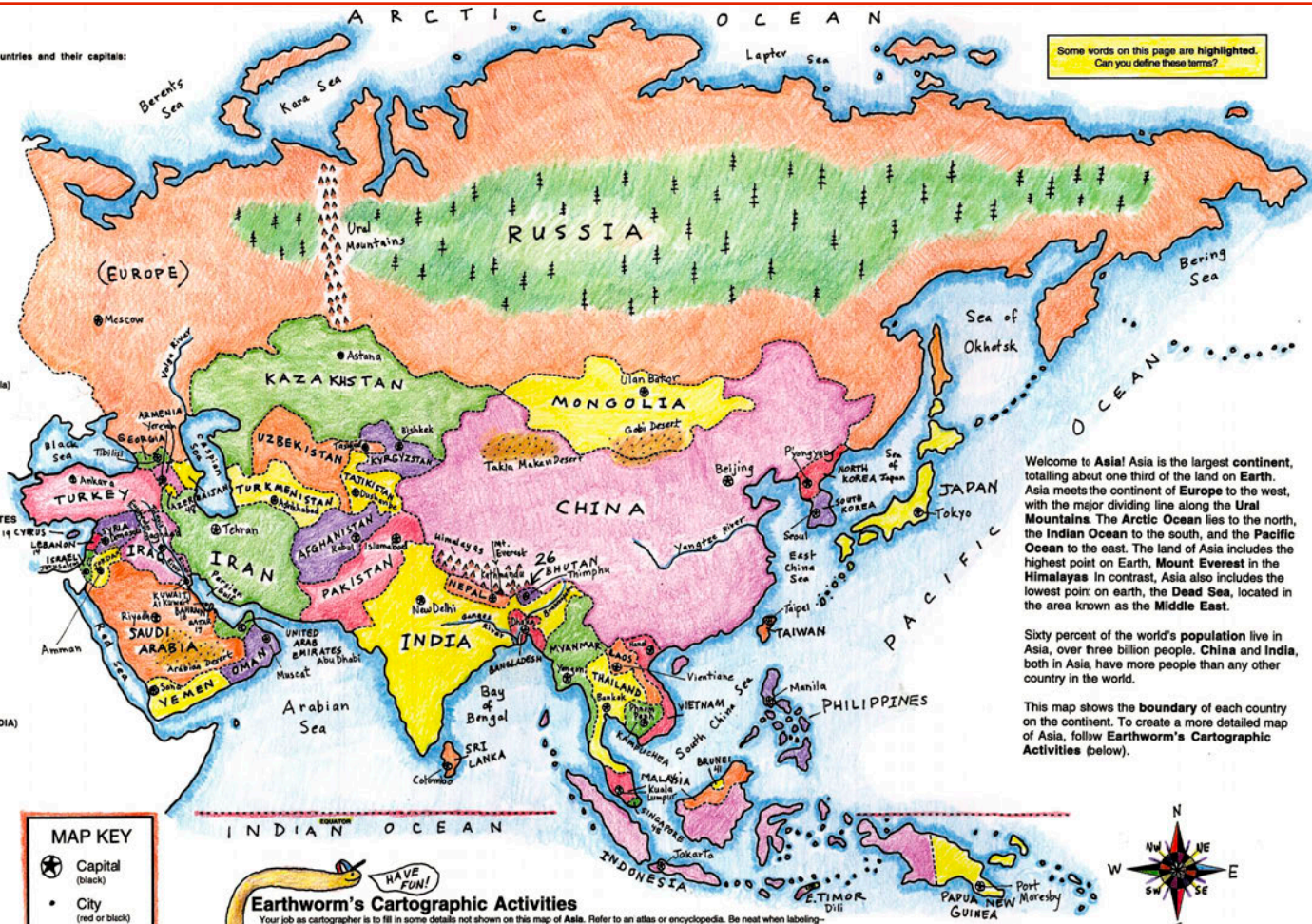
Just as Robert Louis Stevenson did when he wrote his novel TREASURE ISLAND, you can design your own fictional map and write a story about it! Here is an example of a map someone made using our TREASURE MAP!



Here is a list of Asian countries and their capitals:

- 1 RUSSIA Moscow
- 2 KAZAKHSTAN Astana
- 3 UZBEKISTAN Tashkent
- 4 TURKMENISTAN Ashkhabad
- 5 KYRGYZSTAN Bishkek
- 6 TAJIKISTAN Dushanbe
- 7 IRAN Tehran
- 8 JORDAN Amman
- 9 KUWAIT Al Kuwait
- 10 SAUDI ARABIA Riyadh
- 11 TURKEY Ankara
- 12 LEBANON Beirut
- 13 EGYPT (Sinai Peninsula) Cairo
- 14 ISRAEL Jerusalem
- 15 QATAR Doha
- 16 IRAQ Baghdad
- 17 SYRIA Damascus
- 18 UNITED ARAB EMIRATES Abu Dhabi
- 19 YEMEN Sana'a
- 20 PAKISTAN Islamabad
- 21 NEPAL Kathmandu
- 22 INDIA New Delhi
- 23 BHUTAN Thimphu
- 24 BANGLADESH Dhaka
- 25 AFGHANISTAN Kabul
- 26 SRI LANKA Colombo
- 27 KAMPUCHEA (CAMBODIA) Phnom Penh
- 28 MYANMAR Yangon
- 29 LAOS Vientiane
- 30 THAILAND Bangkok
- 31 VIETNAM Hanoi
- 32 CHINA Beijing
- 33 MONGOLIA Ulan Bator
- 34 NORTH KOREA Pyongyang
- 35 SOUTH KOREA Seoul
- 36 JAPAN Tokyo
- 37 TAIWAN Taipei
- 38 BRUNEI Bandar Seri Begawan
- 39 INDONESIA Jakarta
- 40 MALAYSIA Kuala Lumpur
- 41 PHILIPPINES Manila
- 42 SINGAPORE Singapore City
- 43 PAPUA NEW GUINEA Port Moresby
- 44 ARMENIA Yerevan
- 45 AZERBAIJAN Baku
- 46 GEORGIA Tbilisi
- 47 EAST TIMOR Dili

Some words on this page are highlighted. Can you define these terms?



Welcome to Asia! Asia is the largest continent, totalling about one third of the land on Earth. Asia meets the continent of Europe to the west, with the major dividing line along the Ural Mountains. The Arctic Ocean lies to the north, the Indian Ocean to the south, and the Pacific Ocean to the east. The land of Asia includes the highest point on Earth, Mount Everest in the Himalayas. In contrast, Asia also includes the lowest point on earth, the Dead Sea, located in the area known as the Middle East.

Sixty percent of the world's population live in Asia, over three billion people. China and India, both in Asia, have more people than any other country in the world.

This map shows the boundary of each country on the continent. To create a more detailed map of Asia, follow Earthworm's Cartographic Activities (below).

MAP KEY

- ★ Capital (black)
- City (red or black)
- ▲▲ Mountains (brown or green)
- ☀ Desert (light brown)
- 🌲 Forest: (green)
- River (blue)

Earthworm's Cartographic Activities

Your job as cartographer is to fill in some details not shown on this map of Asia. Refer to an atlas or encyclopedia. Be neat when labeling—use a sharp pencil. Write small, always print. Refer to the Map Key for symbols and suggested colors. Colored pencils work best when drawing in details like mountains or rivers. When filling in areas with color, shade very lightly so you don't obscure other features.

Countries Locate and label countries, referring to the list at left. If the space is too small to fill in the name, use the number assigned to the country. For example, BHUTAN has been labeled 26.

Capitals and Cities Locate and label each capital on the map, if space allows. Also, if possible, locate and label other cities in each country.

Oceans and Seas With blue, shade along the coastline of the oceans and seas. Label: Arctic Ocean, Pacific Ocean, Indian Ocean. With smaller letters, label: Black Sea, Caspian Sea, Red Sea, Persian Gulf, Arabian Sea, Bay of Bengal, South China Sea, East China Sea, Sea of Japan, Sea of Okhotsk, Bering Sea.

Major Rivers Draw in and label the following major rivers: Volga River, Ganges River, Tigris River, Euphrates River, Brahmaputra River, Yangtze River.

Mountains Draw in and label these ranges: Himalayas, Ural Mountains. Locate Mount Everest ▲. Add other smaller ranges too.

Forest Draw in and label the vast forest of Siberia.

Desert With a light brown pencil, shade desert regions on the map: Gobi Desert, Arabian Desert.

Decoration To add a decorative touch to your map, color the following: ASIA title, Earthworm (our mascot), Compass Rose.

ASIA

Places and Geographic Features

Map of the Month

© copyright 2005, Map of the Month
 East Side Station, P.O. Box 2484
 Providence, RI 02906-0484
www.mapofthemonth.com

